



iBOTICX LAB

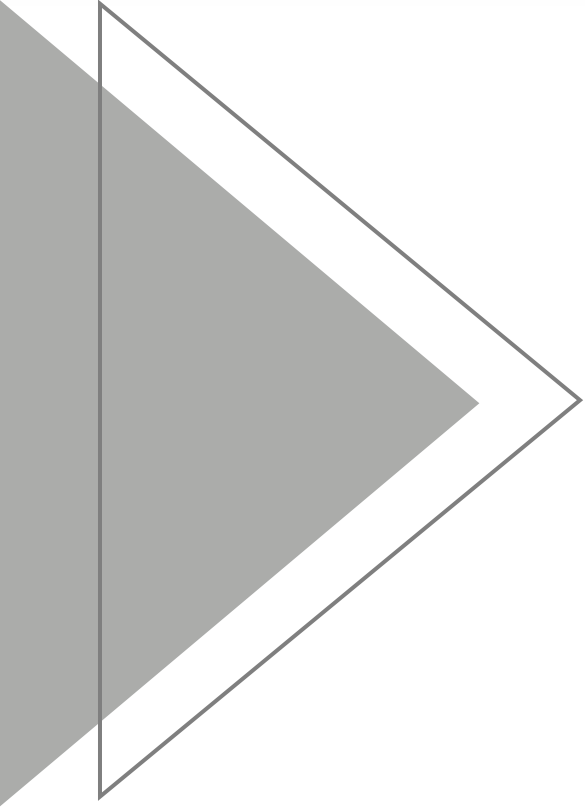
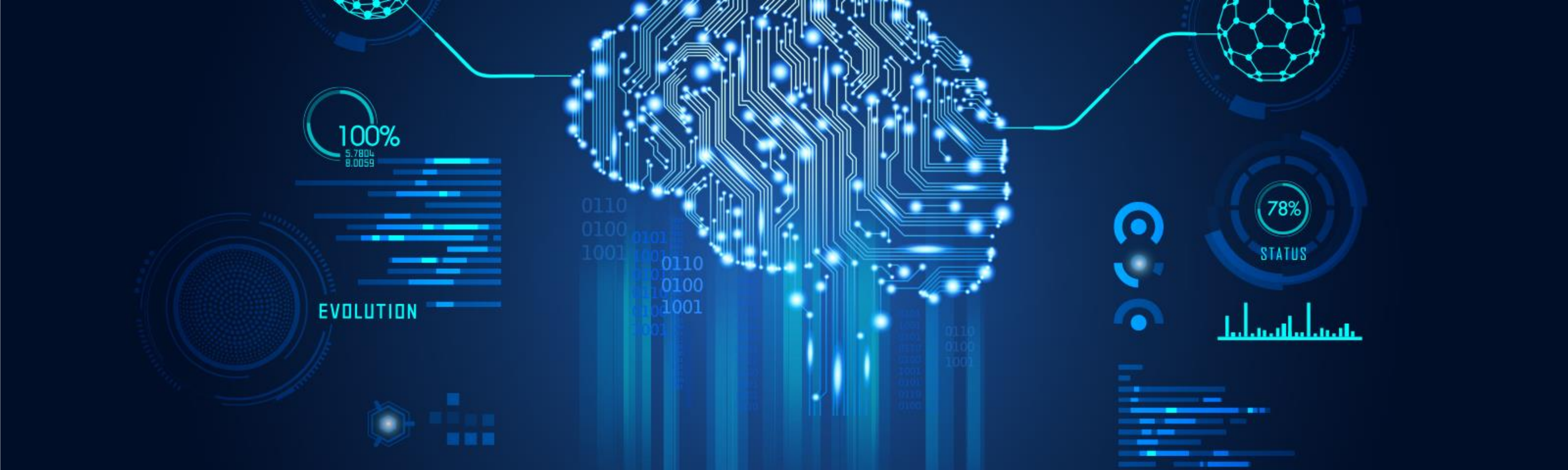
Unleashing Intelligence



Machine Learning - Business Transformation Steps

by Ganesha Murugan

Feb 9, 2019



Machine Learning is a branch of Artificial Intelligence (AI), that systems can learn and improve from experience, with the available data, identify patterns and make decisions with minimal or without human intervention.



“Data” is everything...
When it comes to Machine Learning

A Clean Data set is the “Fuel” for your
Business Digital Transformation Journey



**Turning Data into “Actionable Intelligence” for your business
competitive advantage**

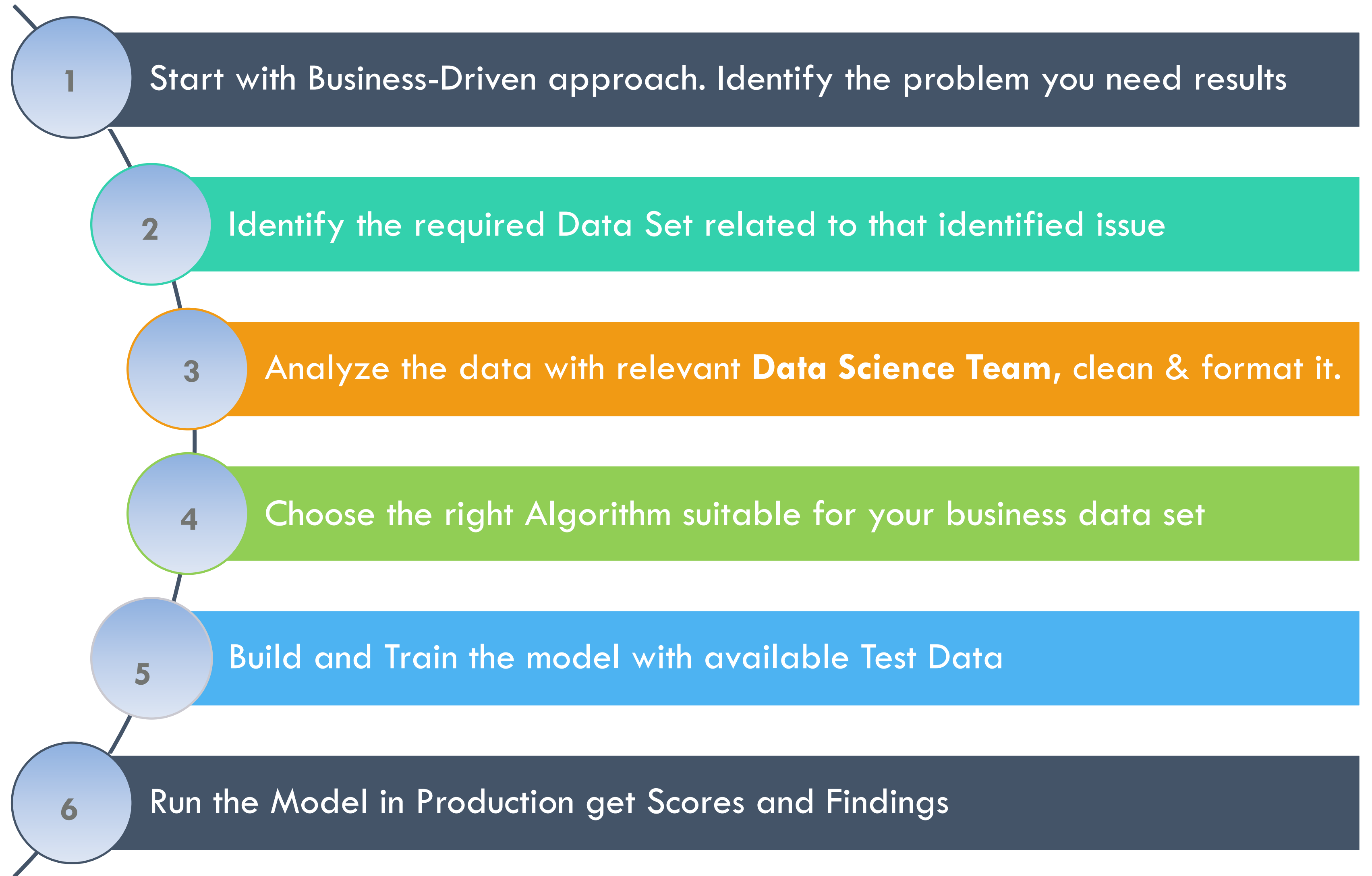
SIX Steps for Applying Machine Learning

Small & Big Companies

4



“Start with a Small Pilot first”



Data Science Team

These are the common title used in Organizations . The size of the team and required professionals depends on the ML adoption stage

Data Scientist

Key Data analyzer with statistical tools and decides on Data Models and Algorithms

Data Engineer

Collects the Data based on business requirements in alignment in business analyst

Data Analyst

Analyze and clean the data and prepare the required data set



Business Analyst

knows the business domain well and also Data analysis

Machine Learning Engineer

To programmatically build Models with Algorithms
Python, R, and other tools

Deep Learning Engineer

Have programming as well as Neural Network knowledge

Building Your Data Science Team

6



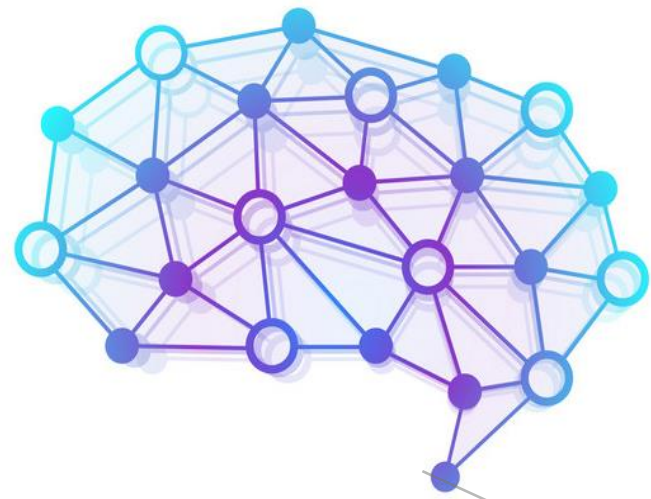
Build a team with a mix of skills. You want to make sure that you are balancing technical team members with business members.



- 1 • Pick a lead data scientist who is well versed in both programming and architectural principles. In addition, the individual must have proven leadership skills in order to direct the team to execute on business goals
- 2 • Bring in a business analyst who knows your industry as well as your company.
- 3 • Select representative business leaders who understand what they need to gain from the project
- 4 • Add subject matter experts to the team who really understand the details of how processes work and the nature of the data. These experts should collaborate with a data engineer who understands how to capture and process the data.
- 5 • Find consultants when needed who can help train the team on new languages or new tools that support the project goals.
- 6 • If your business is using ERP or CRM system, you already have good source of Data for training ML model

Types of Artificial Intelligence Usage in Business

7



“Only those enterprises with a vision for intelligence, autonomous analytics will grow beyond decision making that drives efficiency and productivity to an innovation agenda geared to competitive advantage”

Types of AI in use today

Robotic process automation



Statistical machine learning



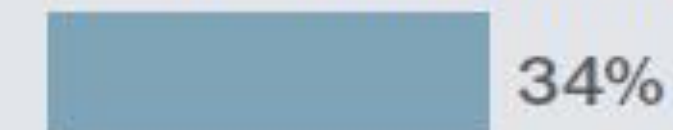
Natural language processing or generation



Expert or rule-based systems



Deep learning neural networks



Physical robots

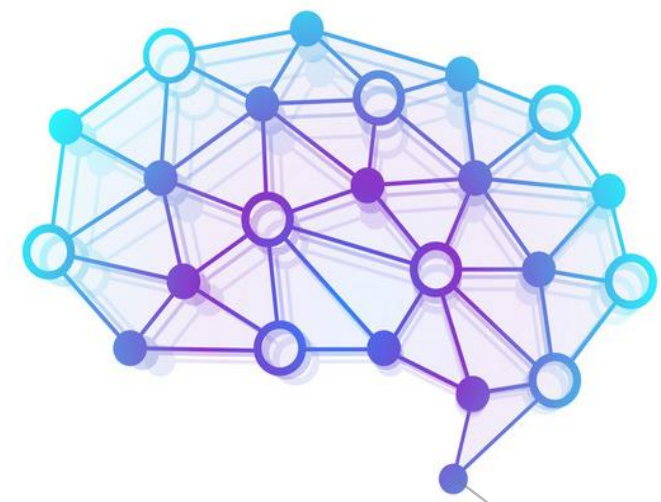


None

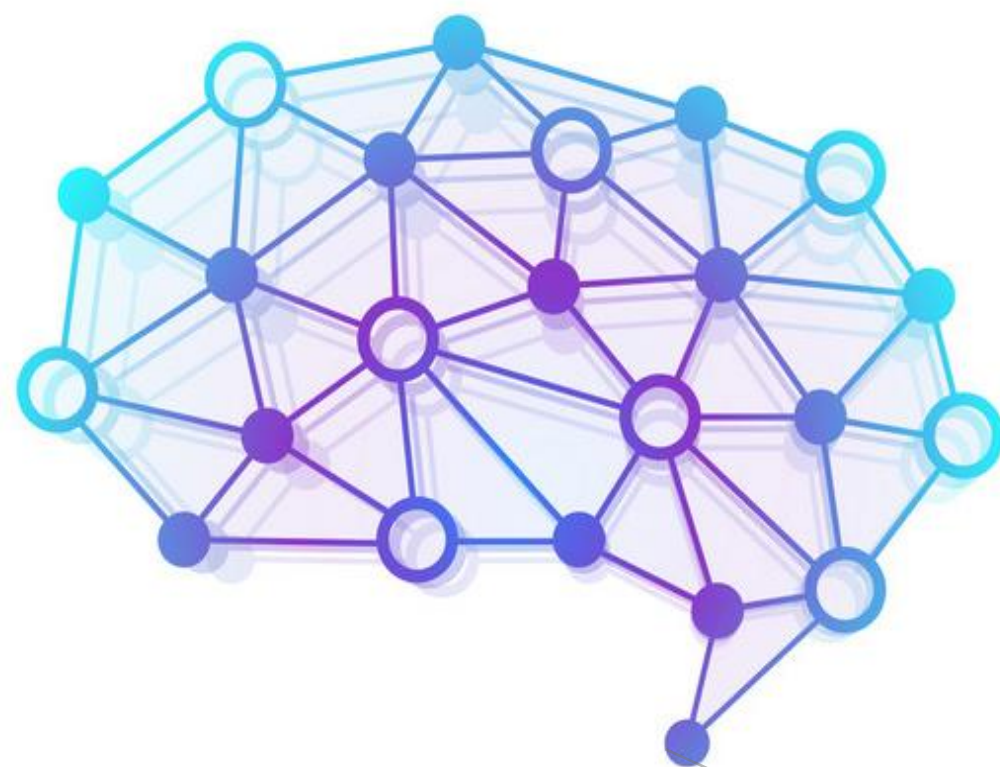


Source: "Deloitte State of Cognitive Survey," August 2017; based on data from 1,500 senior executives from the United States

Key Advantages from Machine Learning Predictions



- Understanding your customer's need than ever before
- Predict better user Preferences & Behavior, optimize process, lead to up-selling and cross-selling
- A good model with correct Data can predict accurate sales projection and finding new customers
- Eliminate fraudulence and risks
- Deep learning helps financial industry to automate trade strategies and make better trade decisions based on ML model findings
- Data-driven decisions saves money, improve efficiency and ensures a secure business



THANK YOU

Disclaimer:-THE INFORMATION SET FORTH HEREIN HAS BEEN OBTAINED OR DERIVED FROM SOURCES GENERALLY AVAILABLE TO THE PUBLIC AND BELIEVED BY THE AUTHOR TO BE RELIABLE, BUT THE AUTHOR DOES NOT MAKE ANY REPRESENTATION OR WARRANTY, EXPRESS OR IMPLIED, AS TO ITS ACCURACY OR COMPLETENESS. THE INFORMATION IS FOR EDUCATIONAL PURPOSES ONLY AND IS NOT INTENDED TO BE USED AS THE BASIS OF ANY BUSINESS OR INVESTMENT DECISIONS BY ANY PERSON OR ENTITY.